

Snap Tabs, Chin Strap, Swing Catch, Sealed Pull Pins Stainless Steel

Contents

SSBTM-1 1.1 Snap Tabs, Chin Strap, and Earphone Retainers

SSBTM-1	1.1.1 Snap Tab Removal
SSBTM-1	1.1.2 Snap Tab Replacement
SSBTM-2	1.1.3 Chin Strap Removal
SSBTM-2	1.1.4 Chin Strap Replacement

SSBTM-3 1.2 Helmet Ring

SSBTM-3	1.2.1 Helmet Ring Repairs
---------	---------------------------

SSBTM-3 1.3 Sealed Pull Pins

SSBTM-3	1.3.1 Removal of Sealed Pull Pins
SSBTM-4	1.3.2 Replacement of Sealed Pull Pins

SSBTM-4	1.3.3 Sealed Pull Pin Overhaul
---------	--------------------------------

SSBTM-5	1.3.3.1 Preparation
SSBTM-6	1.3.3.2 Disassembly
SSBTM-6	1.3.3.3 Reassembly and Filling
SSBTM-10	1.3.4 Pull Pin Sleeve

SSBTM-12 1.4 Swing Catch

SSBTM-12	1.4.1 Disassembly of the Swing Catch
SSBTM-13	1.4.2 Reassembly of the Swing Catch

1.1 Snap Tabs, Chin Strap, and Earphone Retainers

On stainless steel helmets, all of the snap tabs fasten into the helmet ring on the base of the helmet. They are all secured by screws that are fastened with Loctite® 248. These include the screws that secure the chin strap and the earphone retainers.

1.1.1 Snap Tab Removal

Tools required:

- Phillips Head Screwdriver

- 1) Remove the head cushion and chin cushion.
- 2) Remove the screw securing any snap tab that needs replacement.

1.1.2 Snap Tab Replacement

Tools required:

- Phillips Head Screwdriver or Torque Screwdriver

- Loctite® 248
- Plastic Mallet

- 1) If you are replacing snap tabs associated with an earphone retainer clip or chin strap, the snap tabs are incorporated into these components and cannot be replaced separately.



Removing the snap tab that also holds the earphone retainer.

2) Remove any corrosion from the sealing surface with a soft brush and dilute white vinegar solution. Rinse thoroughly and ensure the threads are completely dry before continuing installation.

3) Apply Loctite® 248 to the threads of the screw that secure the snap tab.



Snap tabs must be installed with Loctite®.

⚠ WARNING

Avoid any contact between Loctite® and the face port. This can cause the port to fail unexpectedly and drowning could result.

4) Thread the screw into the hole in the helmet ring, taking care to ensure the base of the snap tab is aligned within the slot for the snap tab. Tighten in accordance with the torque specification found in the correct Table (correct model) of the manual Appendix. See "Torque Specs" module.

1.1.3 Chin Strap Removal

Tools required:

- Phillips Screwdriver
- The Chin Strap must be Replaced as a Complete Unit.

1) Remove the two screws that secure the chin strap to the helmet shell. Clean any sealant or debris from the holes.

2) Remove the worn chin strap and discard.

1.1.4 Chin Strap Replacement

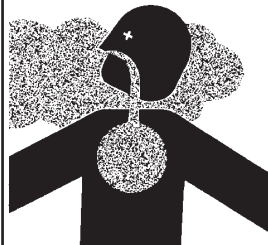


NOTE

The adjustment strap should pull toward the right side of the helmet when it is on your head.

1) Put Loctite® 248 on the screws that secure the tabs that hold the chin strap.

⚠ CAUTION



Use good ventilation when using Loctite®. Fumes from this material may irritate your lungs. Read and follow the directions in the MSDS before using this material.

⚠ CAUTION



Use impermeable gloves and protective clothing as necessary to prevent skin contact when using Loctite®. This material may irritate your skin. Read and follow the directions in the MSDS before using this material.

⚠ CAUTION



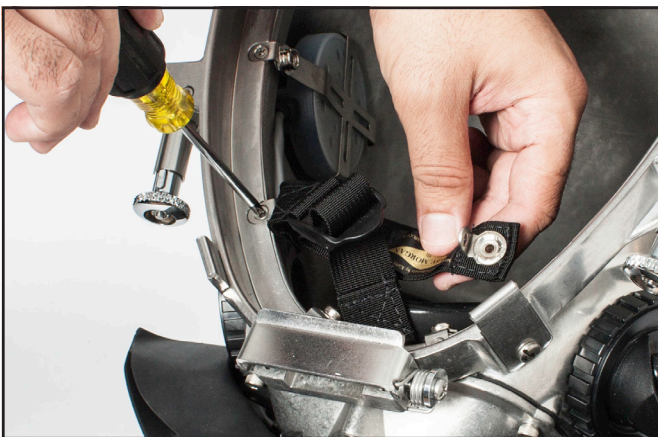
Wear safety goggles or safety glasses with side shields when using Loctite®. This material may irritate your eyes. Read and follow the directions in the MSDS before using this material.



Apply Loctite® to the screws that secure the chin strap.

2) Install the two screws that hold the chin strap in position, using the two screws supplied with the chin strap replacement kit.

3) Tighten the screws with a torque screwdriver in accordance with the torque specification found in the correct Table (correct model) of the manual Appendix. See "Torque Specs" module.



The chin strap should be installed so that it pulls to the right when the helmet is on your head. Following the replacement of any snap tabs, be sure to install the head cushion and chin cushion prior to diving. (And head cushion foam spacer if needed).

1.2 Helmet Ring

1.2.1 Helmet Ring Repairs

The metal ring on the base of the helmet is part of the helmet shell casting. If the ring is damaged, such as damage to the sealing surface, or the ring is bent, the helmet must be returned to KMDSI through your authorized dealer for repair or replacement.

1.3 Sealed Pull Pins

The sealed pull pins lock the helmet onto the divers head, and should be inspected carefully in accordance with Dive Lab checklists A2.1, A2.2 and A2.23. Sealed pull pins should be regularly checked for signs of corrosion and silicone fluid leakage. If the sealed pull pins stick, do not provide adequate tension, do not pass inspection, or are in any way questionable, it is essential that they be serviced by certified personnel, factory trained specifically to perform rebuilds on the sealed pull pins. Read more on this topic; [see Maintenance & Repair Bulletin #2 of 2013](#) on the KMDSI website www.kirbymorgan.com, under "Support" go to Bulletins.

⚠ WARNING

The sealed pull pins must operate properly. If they do not lock properly the helmet could come off the diver underwater and drowning could result. If they do not release when needed, they could make it impossible to remove the helmet in an emergency situation. Do not use the helmet unless the pins are operating correctly.

1.3.1 Removal of Sealed Pull Pins

Tools required:

- 7/64 Hex Key on Torque Screwdriver

1) Unscrew the hex head screws from the helmet ring on the base of the helmet.



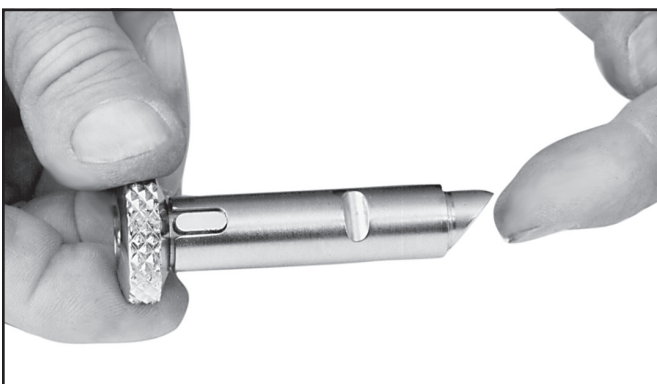
Unscrew the hex head bolts.

2) Remove the sealed pull pins by pulling them out of the helmet ring.

3) Have the sealed pull pins inspected by, and if necessary, serviced by factory trained personnel, certified to rebuild the pins. Or, the pins may be replaced.

1.3.2 Replacement of Sealed Pull Pins

1) Insert the pin(s) into the helmet ring on the base of the helmet. The cam angle must be correct for the pins to function.



The cam angle must be correct for the pins to work properly. Align the angle towards the bottom of the helmet neck ring.

2) New screws have a factory applied locking compound on the threads; no thread locker is required. If the original screws are being re-used and there is little or no thread locker remaining on the threads, apply a small amount of Loctite® 248 onto the ends of the screws.

3) Tighten the Allen screw into the bottom ring and tighten until it is just flush and has bottomed in the counter bore. If the original screws are being reused apply a small amount of Loctite® 248 onto the ends of the screws..



The screws that secure the sealed pulled pins must be properly installed and tightened.

1.3.3 Sealed Pull Pin Overhaul

Tools required:

- P/N 525-211 Sealed Pull Pin Overhaul Kit
- 3/4" Allen Wrench
- Loctite® 248
- Nylon Tube Brush
- Block of Wood Approximately 2" × 4" × 8" with a Half Inch Diameter Hole in the Center 3/8" to 1/2" Deep
- 1/2" Wooden Dowel
- Access To Clean Fresh Water Clean Rags/ Paper Towels
- Mild Hand Washing Dish Soap Or Simple Green®
- Latex or Rubber Gloves

CAUTION

Overhauling the Sealed Pull Pins requires the use of the proper tools and components. Only use the type of silicone oil contained in this kit. Do not substitute O-rings. The red silicone O-rings swell after contact with the silicone oil. The use of the silicone O-rings allows for better sealing than rubber compounds because the silicone rubber swells after being in contact with the silicone oil.



VIDEO



How To: Kirby
Morgan Sealed Pull
Pin Overhaul Kit

https://www.youtube.com/watch?v=PyUgwwN_I9Y

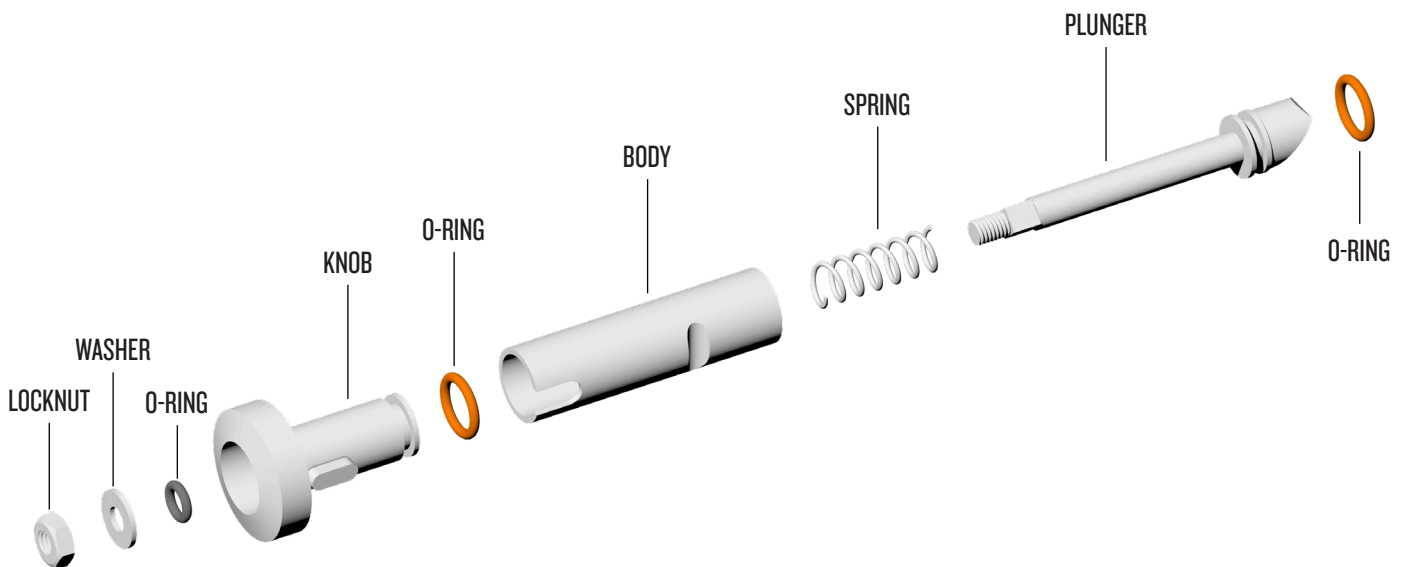
The sealed pull pins used on KMDSI helmets work extremely well and have shown to be very reliable with only minimal maintenance. The reliability stems from the pull pins being filled with silicone oil and sealed with O-rings. The silicone oil allows smooth hydraulic operation while preventing sand and debris from entering the sleeve. Under mild conditions the Pull Pins will operate for one to two years before the sliding surfaces start to wear the O-rings, allowing oil leakage to occur and eventually resulting in stiff operation. Diving in salt water with minimal rinsing, as well as welding, burning and especially jetting, will cause accelerated wear of the O-rings and possible corrosion of the pull pin components.

Once the surface chrome on the pull knob has worn away due to corrosion /electrolysis, the pull pins will require disassembly and overhaul more frequently, usually every year to 18 months. If the pull pins have had water intrusion resulting in excessive corrosion of components, the effected components will need to be replaced. Until recently, overhaul of pull pins was only accomplished by KMDSI. This overhaul procedure was written to better serve the end user and guide KMDSI technicians in the overhaul of the pull pins. Technical questions regarding this procedure should be addressed to KMDSI or Dive Lab.

Pre and post dive inspections are recommended and will help with the detection of excessive wear or corrosion.

1.3.3.1 Preparation

1) Drill a ½" diameter hole by ½" deep in the center of a 2" × 4" piece of wood approximately eight inches long and set aside. The 2" × 4" makes a good working base and helps keep the pull pin from moving during assembly.



Exploded view of the sealed pull pin



2) Drill a $\frac{1}{4}$ " diameter hole approximately $\frac{1}{2}$ " deep in one end of the wooden dowel. Make sure to drill this hole as close to the center of the dowel as possible. If the hole is drilled off center by too much, it may not align properly when it is needed to do so. It is also useful when inserted in the hole in the 2" x 4" when filling the pull pin casing with oil.

1.3.3.2 Disassembly



NOTE

Sealed pull pins made prior to 2003 used a $\frac{1}{4}$ " locknut. There is no reason other than putting an older helmet back into service where one would encounter a $\frac{1}{4}$ " locknut.

Stainless steel helmet retaining screws are located on the bottom of the helmet ring.

Preparation: Disassembling the pull pin should be done over a large paper cup or suitable container to capture oil and associated parts of the pull pin.

1) Using the $\frac{5}{16}$ " Allen wrench remove pull pin retaining screw and remove the pull pin from the helmet ring.



2) Hold the knob end of the pull pin while using the $\frac{3}{8}$ " nut driver to loosen and remove the lock nut.

3) Pull the knob free, then slide the plunger free from the body.

4) Remove and separate all associated parts. Dispose of all three O-rings and locknut.



5) Clean all parts with a nylon brush using a solution of mild soap and water then thoroughly rinse with clean fresh water and dry. Clean inside of body with nylon brush to remove debris and corrosion.

6) Inspect the pull pin body, slide surfaces, knob, spring and plunger for corrosion damage.



NOTE

Corroded parts can be soaked in a solution of 5% percent white vinegar and water for up to one hour. Any parts showing damage from excessive corrosion that could weaken the component or not allow the O-rings to seal must be replaced. Additionally, if the threaded area on the piston is damaged the piston should be replaced.

1.3.3.3 Reassembly and Filling



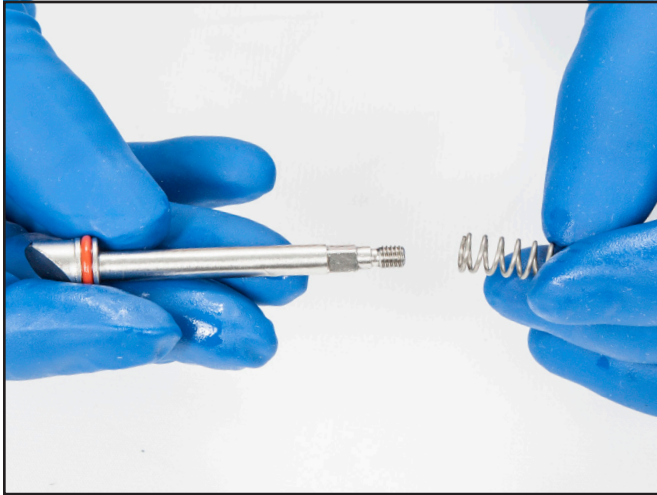
NOTE

New silicone sealing O-rings must be used on the piston and knob. O-rings that have been in contact with silicone oil become very soft and will usually tear or chip during assembly, if attempting to re-use them. Always replace these O-rings when rebuilding this assembly

DO NOT PRE-LUBRICATE THE O-RINGS

1) Install the two new red O-rings, one on the plunger, one on the knob and set aside.

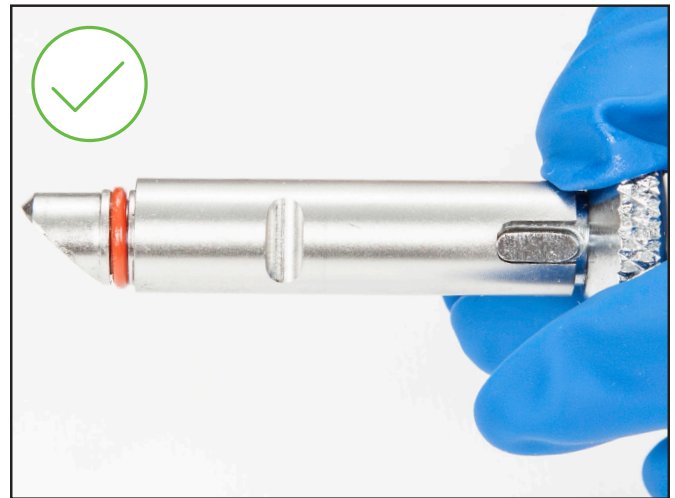
2) Slide spring onto plunger and set aside.



3) Carefully install the knob into the body, making sure not to pinch the O-ring. Ensure the index tab on the knob aligns with the recess on the body.



you. With one finger on the knob and the spring on the plunger, place the plunger assembly into the body so that you can see the beveled end of the plunger. It will be in line with the index recess.



4) Orient the pull pin body so the index is facing



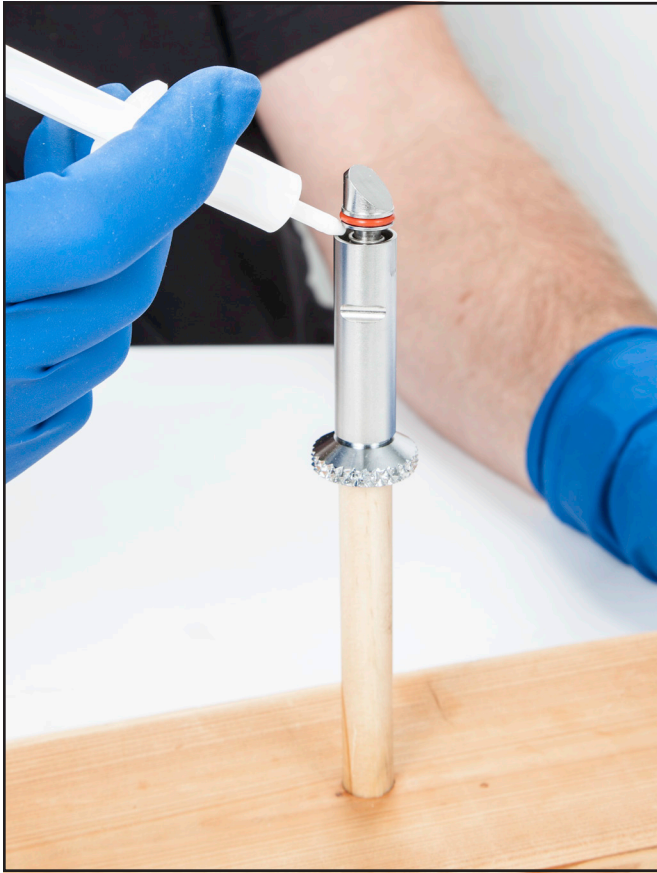
5) Place the black O-ring over the threaded plunger and using the dowel with the hole, press the O-ring into the knob recess around the threaded plunger. Ensure the black O-ring is in the recess formed by the threaded plunger and the groove in the pull knob. The threaded plunger protrudes just enough to get the nut on the threaded shaft approximately one turn.

**NOTE**

Thread the nut only about one turn so that the knob end is sealed for filling with oil. This will leave a small opening between the body and plunger for filling on the opposite end using the syringe. The washer will not be used at this time.

6) Insert the wooden dowel (hole end up) into the hole found on the 2" x 4".

7) Place the knob end of assembly onto wooden dowel. With your hands on the body slightly push down to create a small gap at the plunger end of pull pin.



8) Fill pull pin with oil from the plunger end, use half the amount of oil contained in one of the syringes and do not fill to the top of the pull pin body. The remaining oil and syringe may be either stored or used in a second pull pin.



If the body gets completely filled, you will need to dump out approximately 5-8 drops.

NOTE

9) Slightly push down on the beveled end of the plunger as you lift the assembly away from the wooden dowel. Keep the pull pin in a vertical orientation.



10) Using the $\frac{3}{8}$ " nut driver, slowly tighten the nut and draw the O-ring at the beveled end into the body. The red O-ring will no longer be visible.



11) Keep one finger on the plunger end while turning the pull pin 180 degrees so the knob is now at the top and the plunger at the bottom positions.



12) Remove lock nut using $\frac{3}{8}$ " nut driver and install washer.



13) Place lock nut back onto threaded end of plunger and use the $\frac{3}{8}$ " nut driver to tighten until nut bottoms out.

14) Wipe any excess oil from the pull pin and test the pull pin to ensure the pin moves smoothly and does not bind. If the pull pin does not pull out smoothly and does not snap back when released, disassemble, inspect all parts and try again until proper operation is achieved.

15) Reinstall pull pin into the helmet. Tighten the Allen screw into the bottom ring and tighten until it is just flush and has bottomed in the counter bore. If the original screws are being reused apply a small amount of Loctite® 248 onto the ends of the screws.



NOTE

If any part of the red O-ring at the beveled end is visible, this is an indication that too much oil is in the body. If this is the case, carefully redo steps 2)-14).

1.3.4 Pull Pin Sleeve

Tools required:

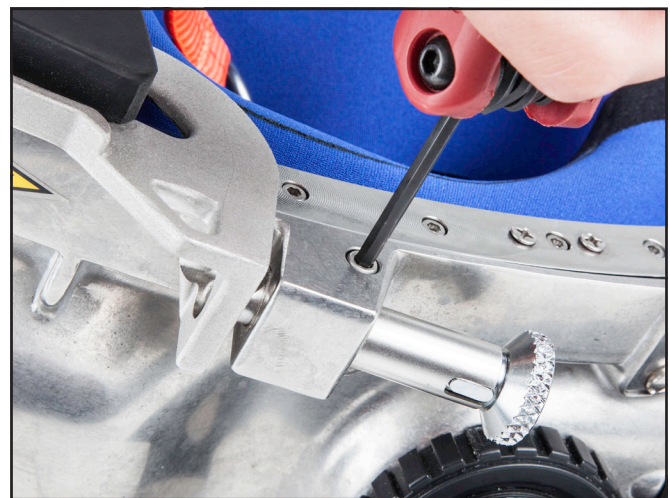
- P/N 525-112 Pull Pin Sleeve Kit
- $\frac{1}{4}$ " Hex Wrench
- $\frac{1}{4}$ " Torque Wrench with Hex Attachment
- Loctite® 248



IMPORTANT

Pull pins should be in the closed position when installing.

1) Using a $\frac{1}{4}$ " hex wrench remove the pull pins.



2) The sleeves need to be trimmed at the trim line for stainless steel helmets. No trimming is needed if the sleeves are used with pins on fiberglass helmets.



3) Slide pull pin sleeve onto pull pin(s).



Untrimmed pull pin sleeve shown

4) Insert the pin(s) into the bottom ring on the base of the helmet. The cam angle must be correct for the pins to function.

5) If the original screws are being re-used ensure threads are clean and apply a small amount of Loctite® 248 onto the ends of the screws. If new screws are used, applying Loctite® or other thread locker is not necessary because the screws come with a locking compound already applied.



6) Insert the screws into the bottom ring and tighten until it is just flush and has bottomed in the counter bore.



7) Check to make sure the sealed pull pins are functioning correctly.

1.4 Swing Catch

The swing catch assembly helps to provide alignment for the front of the neck ring assembly, as well as making it easy to remove the helmet. The swing catch should rarely need attention or service, unless damaged accidentally.

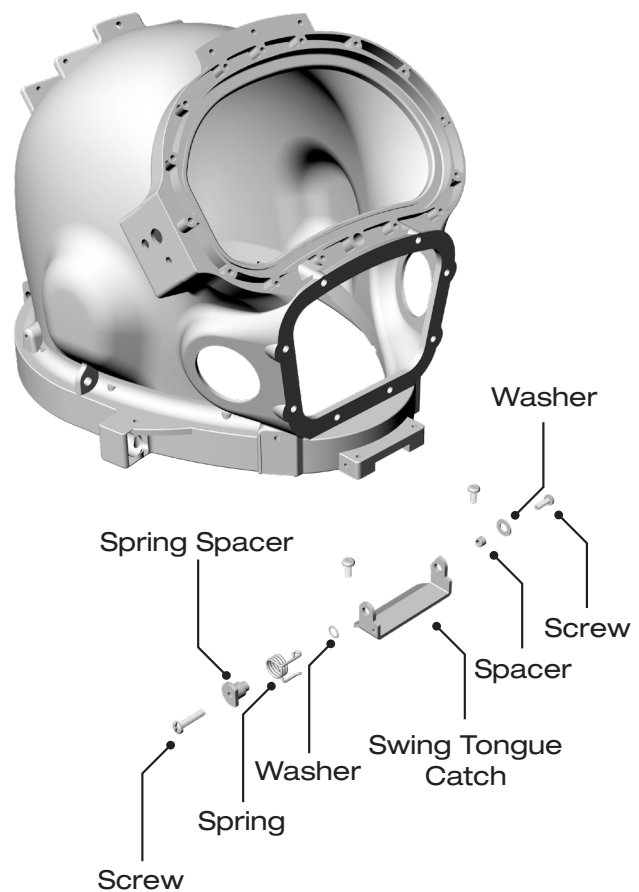


Diagram of the swing catch.

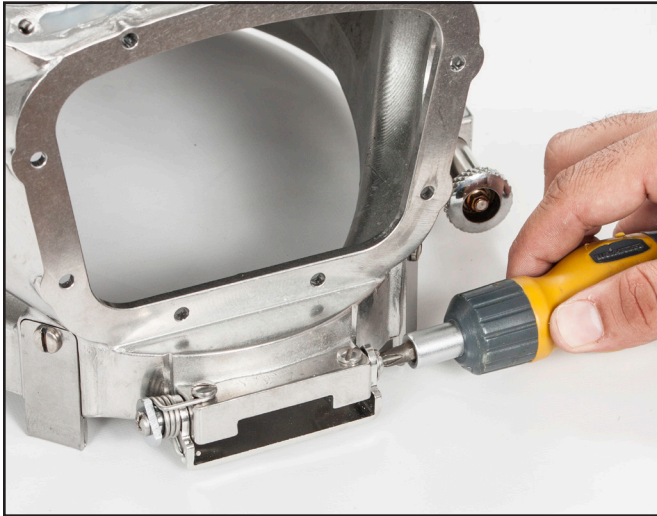
1.4.1 Disassembly of the Swing Catch

Tools required:

- Flat Blade Screwdriver

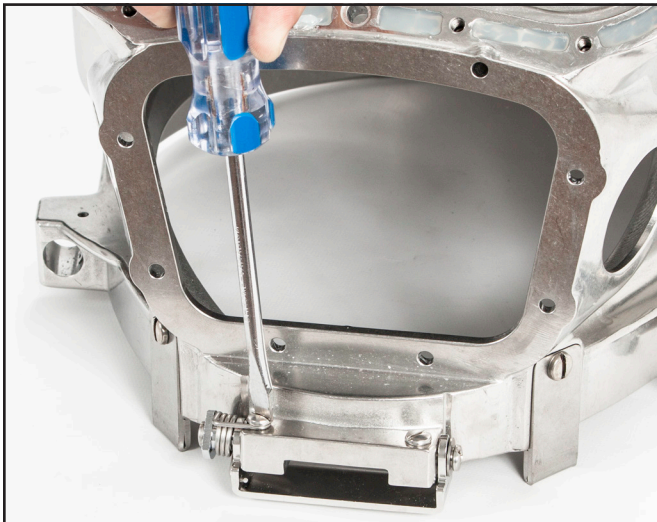
1) Prior to servicing the swing catch, the pod and regulator assembly must be removed if the spring is to be removed. Alternatively, pod removal may be avoided by using a 90 degree screwdriver to remove the spring, but this may take some extra time. For the 350 pod see "1.1.1 Pod System and Regulator Removal" on page POD-1 and for the REX pod see "1.1.1 REX® Pod System and Regulator Removal" on page REXPOD-1 for the procedure for removing the pod and regulator assembly.

2) Remove the screw on the port side of the swing catch.



Remove the screw from the port side of the swing catch.

- 3) Remove the spring spacer.
- 4) Remove the screw from the starboard side of the swing catch.



To replace the spring, you will also need to remove the screw on the starboard top of the tongue catch area on the helmet. To access this screw, you will need to either remove the pod/regulator, or use a 90 degree screwdriver.

- 5) Remove the washer and the spacer. The swing catch should now disengage from the spring.

1.4.2 Reassembly of the Swing Catch



Loctite® 248 should be applied on all screws used in the assembly of the swing catch.

⚠ CAUTION	
	<p>Use good ventilation when using Loctite®. Fumes from this material may irritate your lungs. Read and follow the directions in the MSDS before using this material.</p>

⚠ CAUTION	
	<p>Use impermeable gloves and protective clothing as necessary to prevent skin contact when using Loctite®. This material may irritate your skin. Read and follow the directions in the MSDS before using this material.</p>

⚠ CAUTION	
	<p>Wear safety goggles or safety glasses with side shields when using Loctite®. This material may irritate your eyes. Read and follow the directions in the MSDS before using this material.</p>



All of the screws in the swing catch assembly should be lightly coated with Loctite® 248 prior to assembly.

1) Insert the washer between the tongue catch area on the helmet and the swing catch.

2) Place the looped end of the spring on the top surface of the swing mounting plate as shown. Insert the mount screw through the loop and tighten the screw.

Align the straight section of the spring with the front edge of the mounting area and tighten the screw in accordance with the torque specification found in the correct Table (correct model) of the manual Appendix. See "Torque Specs" module. This will properly position the spring to align with the catch and side mounting hole.

3) Insert the hooked end of the spring into the small hole in the swing catch. Slip the swing catch over the tongue catch area of the helmet ring on the base of the helmet. The spring end goes on the right side.

4) Insert the screw and spring spacer into the spring and thread the screw into the tongue catch area on the helmet ring. Make sure the spacer is properly aligned. Run the screw in until it is just snug.



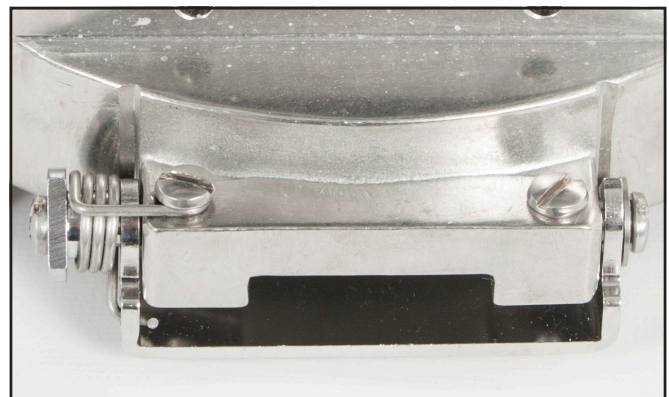
The threads of the spring spacer should be lightly coated with Loctite® 248 prior to assembly.

5) Place the washer and spacer on the screw and insert the screw through the hole on the left end of the swing catch.

6) Tighten the screw while ensuring that the spacer fits through the hole in the swing catch and no binding occurs.

7) Tighten all three screws. See "Torque Specs" module.

8) Test the function of the swing catch. Also, test prior to diving with the system to ensure proper operation.



Properly assembled swing catch.

9) If needed, reinstall the pod and regulator assembly for the 350 Pod per "1.2 Reinstalling the Pod on the Helmet" on page POD-5 or for the REX pod per "1.2 Reinstalling the Pod on the Helmet" on page REXPOD-4.