

## Neck Ring Assembly (Left)

P/N 505-090 (Small, Neck Dam)

**P/N 505-119 (Medium, Neck Dam)\***

P/N 505-120 (Large, Neck Dam)

P/N 505-093 (X-Large, Neck Dam)

P/N 505-118 (Small/Medium, Latex Neck Dam) (SL 17K, KM 37, 47 & 57)

P/N 505-117 (Medium/Large, Latex Neck Dam) (SL 17K, KM 37, 47 & 57)

Location #	Part #	Description	Location #	Part #	Description
1	540-105	Split Ring	3	510-450	O-ring, Neck Ring
	510-627	Neoprene Neck Dam, Small	4	560-078	Stepped Neck Dam Ring
	<b>510-628</b>	<b>Neoprene Neck Dam, Medium</b>	5	530-024	Screw
	510-629	Neoprene Neck Dam, Large	6	530-022	Screw
2	510-688	Neoprene Neck Dam, X-Large	7	530-220	Screw
	510-631	Latex Neck Dam, Small/Medium	8	540-115	Strap Plate
	510-633	Latex Neck Dam, Medium/Large	9	505-142	Pull Strap Assembly

\* Medium size standard on all units

## Neck Ring Assembly for Stainless Steel Helmets (Right)

P/N 505-745 (Small, Neck Dam)

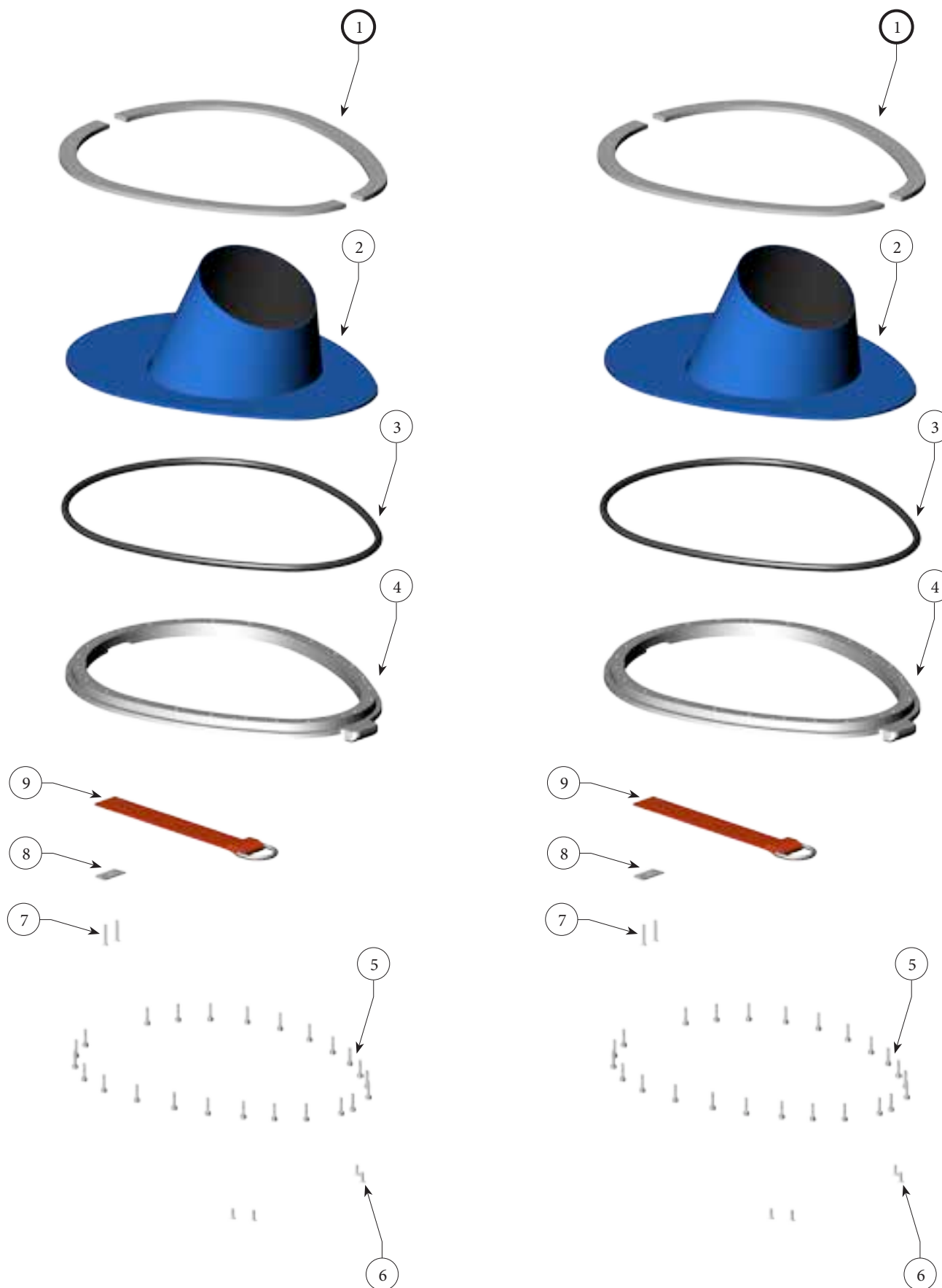
**P/N 505-746 (Medium, Neck Dam)\***

P/N 505-747 (Large, Neck Dam)

P/N 505-749 (X-Large, Neck Dam)

P/N 505-744 (Small/Medium, Latex Neck Dam) (KM 37SS, 77 & 97)

Location #	Part #	Description	Location #	Part #	Description
1	540-546	Split Ring, Stainless Steel	3	510-450	O-ring, Neck Ring
	510-627	Neoprene Neck Dam, Small	4	560-542	Stepped Ring, Stainless Steel
	<b>510-628</b>	<b>Neoprene Neck Dam, Medium</b>	5	530-024	Screw
2	510-629	Neoprene Neck Dam, Large	6	530-022	Screw
	510-688	Neoprene Neck Dam, X-Large	7	530-220	Screw
	510-631	Latex Neck Dam, Small/Medium	8	540-115	Strap Plate
			9	505-142	Pull Strap Assembly



Kirby Morgan Dive Systems, Inc.<sup>®</sup> 1430 Jason Way, Santa Maria, CA 93455

Phone: 805/928-7772 Fax: 805/928-0342

[www.KirbyMorgan.com](http://www.KirbyMorgan.com) e-mail: [kmsdi@KirbyMorgan.com](mailto:kmsdi@KirbyMorgan.com)