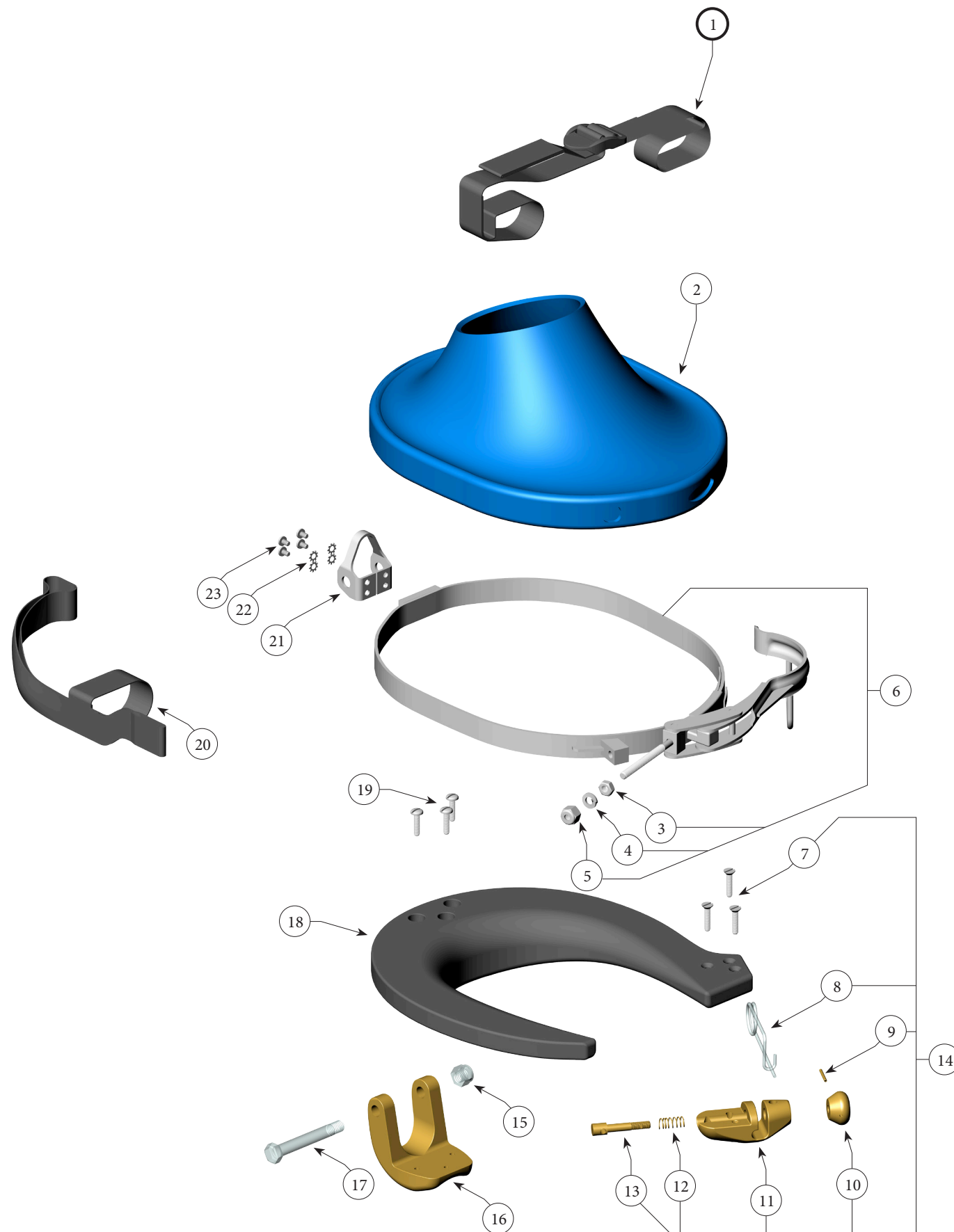


## P/N 505-008 SL 17A/B Neck Clamp/Yoke Assembly

Location #	Part #	Description
1	505-134	Yoke Strap
2	510-533	Drawstring Neck Dam
3	530-317	Nut
4	530-415	Washer
5	530-320	Lock Nut
6	505-055	Neck Clamp Assembly
7	530-066	Screw
8	535-900	Safety Pin (Pull Pin)
9	530-601	Retainer Pin
10	550-255	Knob, Pull Pin
11	560-051	Latch Catch Body
12	560-050	Latch Catch Body, Chrome
13	535-808	Spring, Pull Pin
14	550-257	Plunger
15	505-010	Latch Catch Assembly, Pull Pin
16	530-028	Lock Nut
17	560-026	Hinge
18	560-027	Hinge, Chrome
19	530-034	SL 17B Hinge Bolt
20	520-117	Urethane Yoke
21	530-080	Screw
22	505-138	Strap Guide
23	540-157	Rear Hinge Tab
	530-406	Washer
	530-025	Screw



Kirby Morgan Dive Systems, Inc.<sup>®</sup> 1430 Jason Way, Santa Maria, CA 93455

Phone: 805/928-7772 Fax: 805/928-0342

[www.KirbyMorgan.com](http://www.KirbyMorgan.com) e-mail: [kmdsi@KirbyMorgan.com](mailto:kmdsi@KirbyMorgan.com)