

SL 27[®] Neck Ring Assembly (Left)

P/N 505-094 (Small, Neck Dam, SL 27)

P/N 505-100 (Medium, Neck Dam, SL 27)*

P/N 505-097 (Large, Neck Dam, SL 27)

P/N 505-104 (X-Large, Neck Dam, SL 27)

P/N 505-095 (Medium/Large, Latex Neck Dam, SL 27)

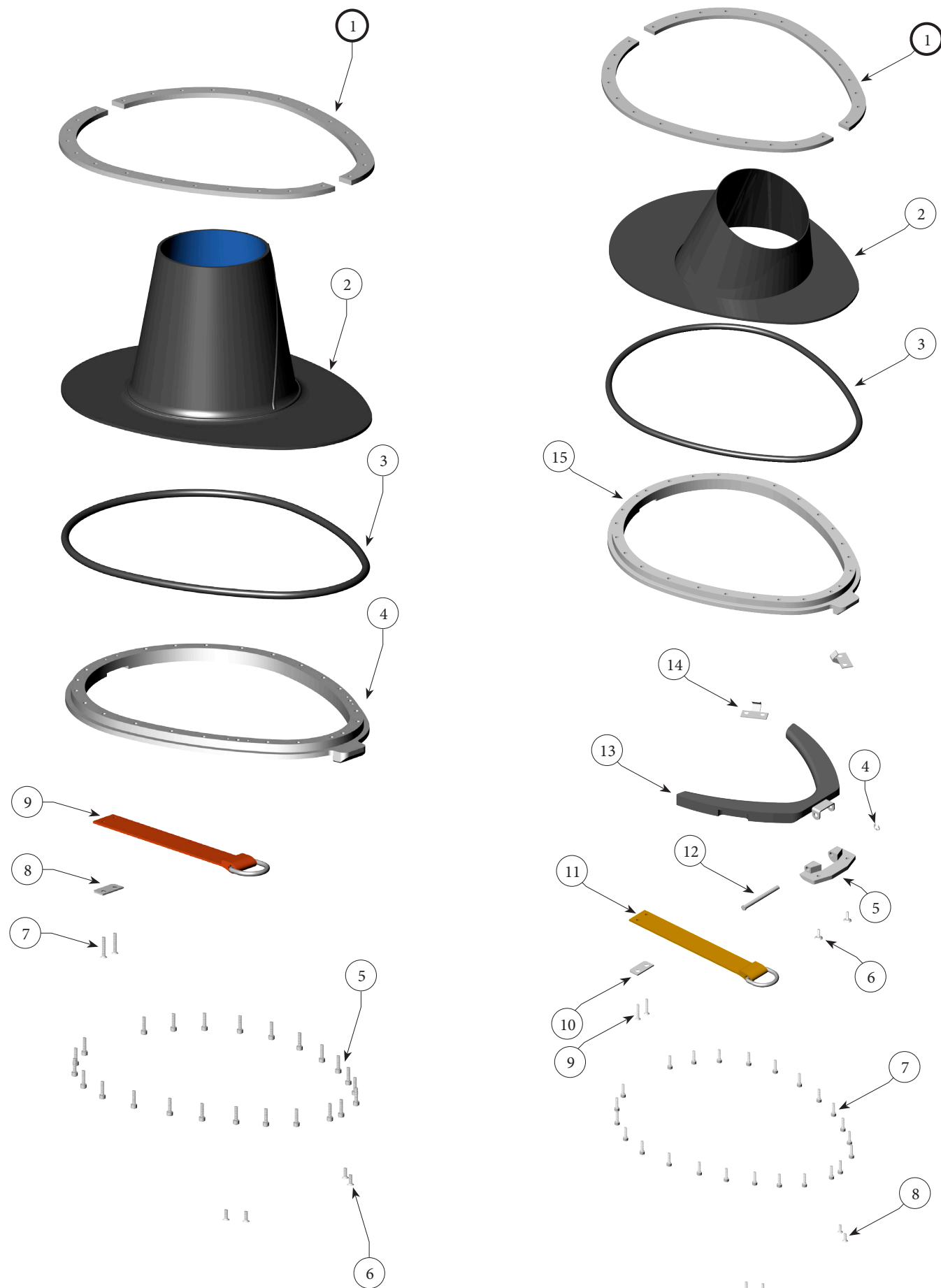
Location #	Part #	Description
1	540-105	Split Ring
	510-502	SL 27 Neoprene Neck Dam, Small
2	510-504	SL 27 Neoprene Neck Dam, Medium
	510-503	SL 27 Neoprene Neck Dam, Large
	510-500	SL 27 Latex Neck Dam, Medium/Large
3	510-450	O-ring, Neck Ring
4	560-078	Stepped Neck Dam Ring
5	530-024	Screw
6	530-022	Screw
7	530-220	Screw
8	540-115	Strap Plate
9	505-142	Pull Strap Assembly

SL 17C Latex Neck Ring Assembly (Right)

P/N 505-101 (Small/Medium, Latex Neck Dam) (Standard on SL 17C)*

Location #	Part #	Description	Location #	Part #	Description
1	540-105	Split Ring	10	540-115	Strap Plate
2	510-631	Latex Neck Dam, Small/Medium	11	505-142	Pull Strap Assembly
3	510-450	O-ring, Neck Ring	12	530-311	Pin, Front Yoke Hinge
4	530-312	Clip, Hinge Pin	13	520-012	Front Yoke
5	550-216	Front Yoke Hinge	14	540-056	Catch, Front Yoke
6	530-018	Screw	15	560-078	Stepped Neck Dam Ring
7	530-024	Screw			
8	530-022	Screw			
9	530-220	Screw			

* Medium size standard on all units



Kirby Morgan Dive Systems, Inc.[®] 1430 Jason Way, Santa Maria, CA 93455

Phone: 805/928-7772 Fax: 805/928-0342

www.KirbyMorgan.com e-mail: kmsdi@KirbyMorgan.com