



# Kirby Morgan Dive Systems, Inc.®

1430 Jason Way, Santa Maria, California 93455

Phone: 805/928-7772 Fax: 805/928-0342

www.kirbymorgan.com e-mail: info@kirbymorgan.com

## Product Bulletin - #5 of 2005 Change to SuperLite®-27 Helmet (P/N 500-040/041) Tri-Valve™ Exhaust (KMDSI Part #525-755) March 15, 2005

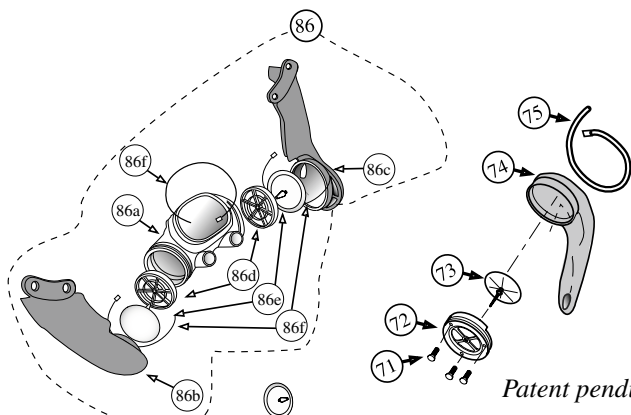
The Tri-Valve™ Exhaust is now standard on all SuperLite®-27 helmets, effective immediately. This system provides improved protection against biologically contaminated water, by providing an additional exhaust valve on each side of the whisker. Exhalation resistance has also been reduced.

The Tri-Valve™ kit consists of the whisker assembly, tie-wraps, a water dump exhaust, and a replacement exhaust valve. Installation by a trained KMDSI technician is recommended.



### ⚠ WARNING

The Tri-Valve™ is recommended for diving in biologically contaminated water. However, the chemical compatibility of this exhaust system has NOT been tested at this time, so no recommendations are made regarding environments polluted with hazardous chemicals. Prior to diving in contaminated water, the diver must be properly trained and equipped, and a proper dive plan, including provisions for decontamination following the dive, must be formulated. Failure to follow these precautions could result in serious injury or death.



*Exploded view of Tri-Valve™ kit for SuperLite®-27. Location numbers based on most current drawing of SuperLite®-27.*

*Patent pending.*



**KIRBY MORGAN**  
*Genuine Parts*