



DIVING SYSTEMS INTERNATIONAL®

425 Garden Street, Santa Barbara, California 93101

Phone: 805/965-8538 Fax: 805/966-5761

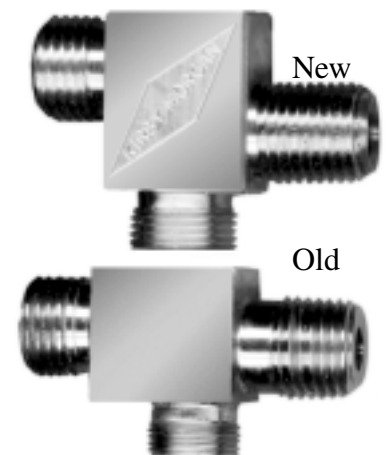
DSI New Part Announcement!

High Flow Emergency Valve

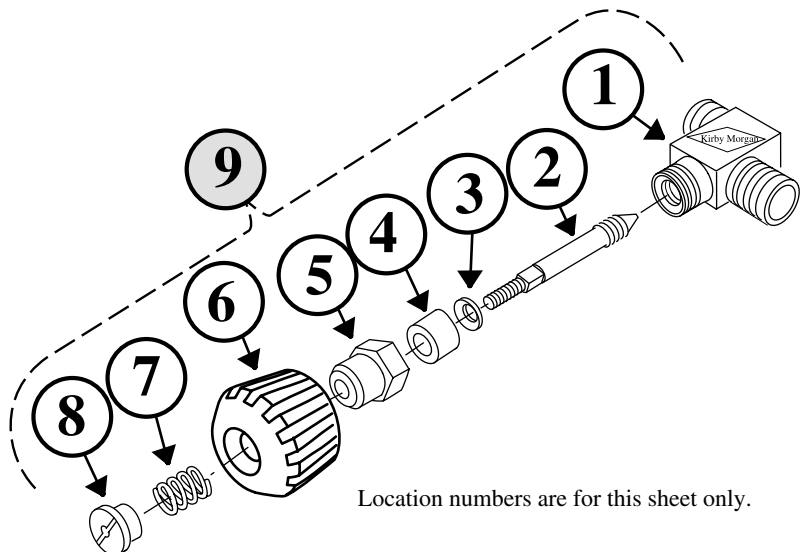
DSI Part # 505-070

DSI announces it's new, **High Flow Emergency Valve**, DSI part # 505-070, as standard issue on all SL-17s, SL-27s, KMB18s/28s, and manifold block assemblies starting Oct. of 1993. *Parts for the new valves are not interchangeable with the old style valves! The old style valves DSI PART # 505-018 are now discontinued and parts availability is limited to stock on hand.*

The new emergency valve body is visibly different from the old style valve. It is slightly longer and the fittings are more offset. It also has the Kirby Morgan diamond emblem engraved on the side for easier identification.



- 1 550-140 Emerg. Valve Body
- 2 550-138 Stem
- 3 540-095 Washer
- 4 520-024 Packing
- 5 550-091 Packing Nut
- 6 520-025 Knob, Control
- 7 535-802 Spring
- 8 550-019 Locknut
- 9 505-070 Emerg. Valve Ass'y



Location numbers are for this sheet only.

© 1993 Diving Systems International, Inc. All Rights Reserved

reprint © 1997 Diving Systems International, Inc. All Rights Reserved Docu # 970820001

KIRBY MORGAN®
Genuine Parts