



# Kirby Morgan Dive Systems, Inc.®

1430 Jason Way Santa Maria, California 93455

Phone: 805/928-7772 Fax: 805/928-0342

www.KirbyMorgan.com email: kmddsi@KirbyMorgan.com

## Part #325-105 Deluxe First Stage Rebuild Kit

PART #	DESCRIPTION	QTY	PART #	DESCRIPTION	QTY
310-003	O-ring	4	410-010	O-ring	1
310-022	O-ring	1	430-060	Retainer Ring	1
310-023	O-ring	1	510-008	O-ring	1
310-115	O-ring	1	510-010	O-ring	1
330-320	Lock Nut	1	510-011	O-ring	1
350-120	Seat	1	510-012	O-ring	3
355-035	Filter	1	510-013	O-ring	2

**\*See next page for O-ring Identification**

O-rings should be lightly lubricated with Christo-Lube® or equivalent. At a minimum, O-rings should be replaced at least once a year. During daily and monthly maintenance, O-rings and valves may be reused providing no damage or deformation is found. O-rings and valves may require replacement more often than yearly, if the use is extreme, or if the 1st stage is used in waters containing oil or chemical contamination. Daily cleaning and inspections as well as performing the will identify the need more accurately than simply placing a number of hours between overhaul. Store spare O-rings, valves and soft goods in a cool, dark, dry place. Avoid prolonged exposure to temperatures above 90 degrees Fahrenheit and/or exposure to ultra violet rays.

### **⚠ CAUTION**

**Use only KMDSI original replacement parts. The use of other manufacturers' parts will interfere with the performance characteristics of your life support equipment and may jeopardize your safety. Additionally, any substitutions will void any warranties offered by KMDSI. When ordering spares, always insist on Kirby Morgan Genuine Parts.**



# Kirby Morgan Dive Systems, Inc.®

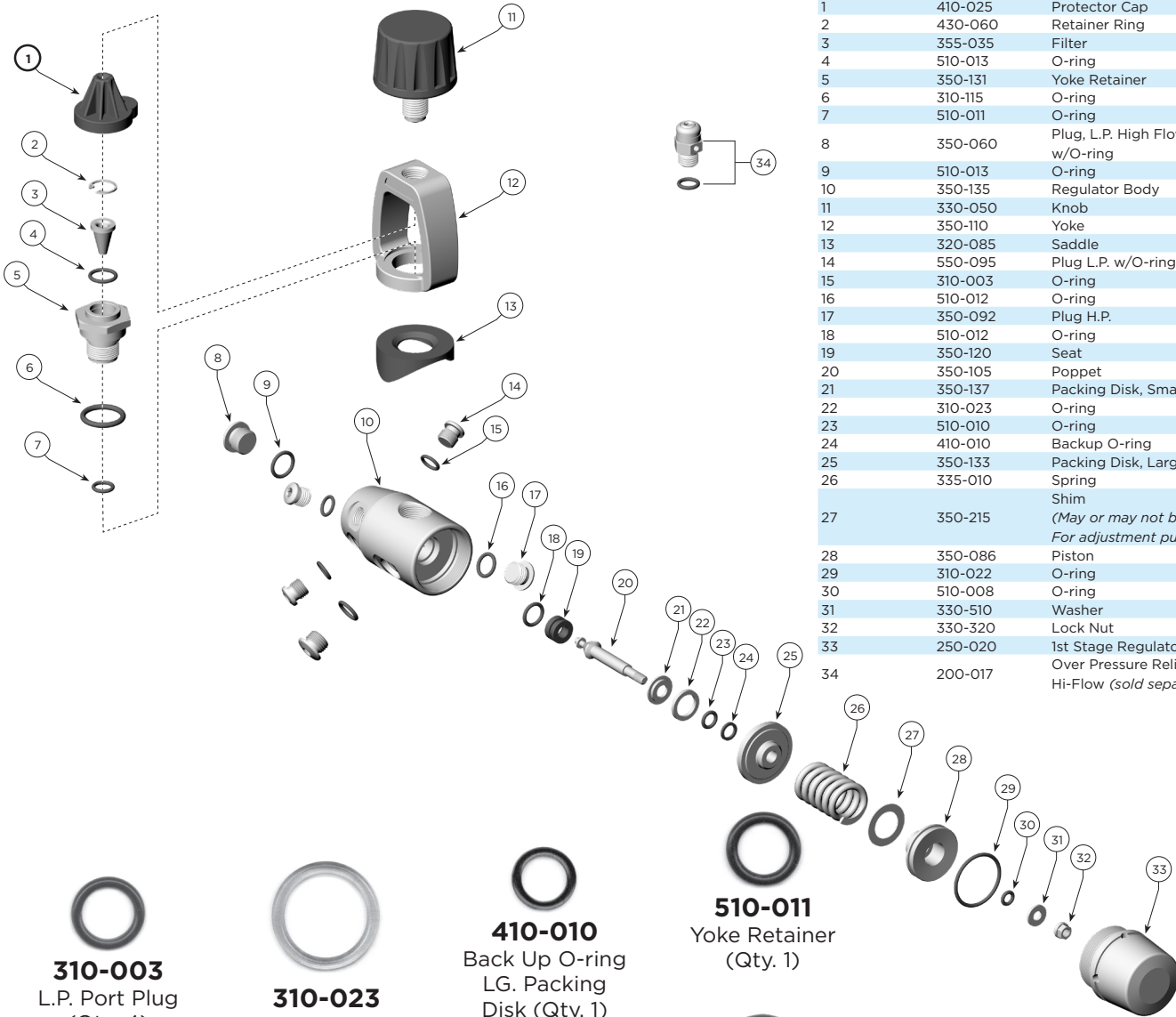
1430 Jason Way Santa Maria, California 93455

Phone: 805/928-7772 Fax: 805/928-0342

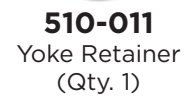
www.KirbyMorgan.com email: kmdsi@KirbyMorgan.com



## SuperFlow® First Stage Regulator P/N 305-161



Location #	Part #	Description
1	410-025	Protector Cap
2	430-060	Retainer Ring
3	355-035	Filter
4	510-013	O-ring
5	350-131	Yoke Retainer
6	310-115	O-ring
7	510-011	O-ring
8	350-060	Plug, L.P. High Flow, w/O-ring
9	510-013	O-ring
10	350-135	Regulator Body
11	330-050	Knob
12	350-110	Yoke
13	320-085	Saddle
14	550-095	Plug L.P. w/O-ring
15	310-003	O-ring
16	510-012	O-ring
17	350-092	Plug H.P.
18	510-012	O-ring
19	350-120	Seat
20	350-105	Poppet
21	350-137	Packing Disk, Small
22	310-023	O-ring
23	510-010	O-ring
24	410-010	Backup O-ring
25	350-133	Packing Disk, Large
26	335-010	Spring
27	350-215	Shim (May or may not be present. For adjustment purposes)
28	350-086	Piston
29	310-022	O-ring
30	510-008	O-ring
31	330-510	Washer
32	330-320	Lock Nut
33	250-020	1st Stage Regulator Cap Over Pressure Relief Valve Hi-Flow (sold separately)
34	200-017	



**Cleaning Agent:** diluted vinegar solution  
**Lubricant:** Christo-Lube® or equivalent



When installing the seat, the concave end goes into the body first.

