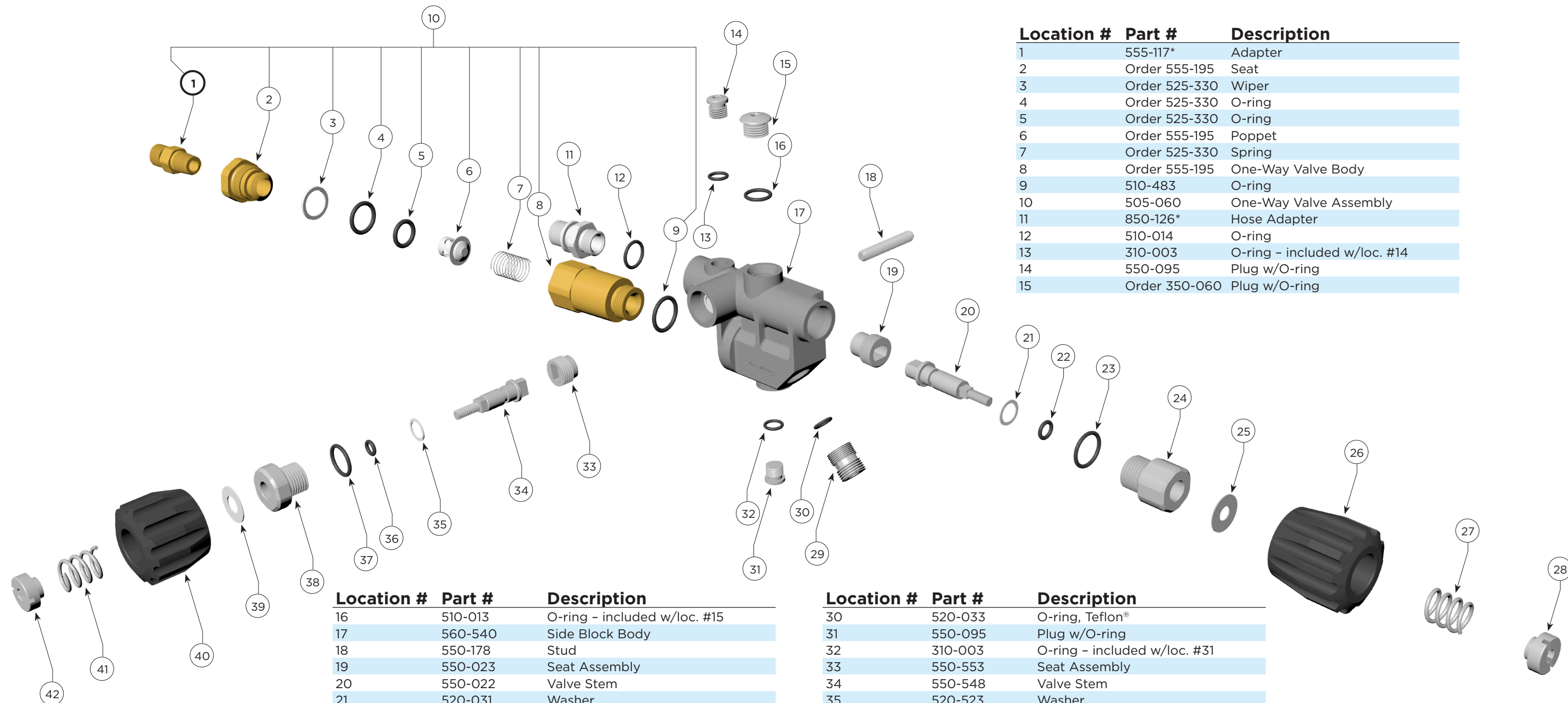


# Side Block Assembly P/N 505-732 (Stainless Steel)



Location #	Part #	Description
1	555-117*	Adapter
2	Order 555-195	Seat
3	Order 525-330	Wiper
4	Order 525-330	O-ring
5	Order 525-330	O-ring
6	Order 555-195	Poppet
7	Order 525-330	Spring
8	Order 555-195	One-Way Valve Body
9	510-483	O-ring
10	505-060	One-Way Valve Assembly
11	850-126*	Hose Adapter
12	510-014	O-ring
13	310-003	O-ring - included w/loc. #14
14	550-095	Plug w/O-ring
15	Order 350-060	Plug w/O-ring

Location #	Part #	Description
16	510-013	O-ring - included w/loc. #15
17	560-540	Side Block Body
18	550-178	Stud
19	550-023	Seat Assembly
20	550-022	Valve Stem
21	520-031	Washer
22	510-010	O-ring
23	510-015	O-ring
24	550-568	Bonnet
25	520-030	Washer
26	520-524	Flex Knob, Steady Flow
27	535-802	Spring
28	550-019	Lock Nut
29	550-564	Bent Tube, Side Block, Adapter

Location #	Part #	Description
30	520-033	O-ring, Teflon®
31	550-095	Plug w/O-ring
32	310-003	O-ring - included w/loc. #31
33	550-553	Seat Assembly
34	550-548	Valve Stem
35	520-523	Washer
36	510-008	O-ring
37	510-014	O-ring
38	550-551	Bonnet
39	520-522	Washer
40	520-525	Flex Knob, Emergency
41	535-802	Spring
42	550-019	Lock Nut

\* Denotes a critical component



**Kirby Morgan Dive Systems, Inc.**® 1430 Jason Way, Santa Maria, CA 93455  
 Phone: (805) 928-7772 Fax: (805) 928-0342  
[www.KirbyMorgan.com](http://www.KirbyMorgan.com) e-mail: [kmdsi@KirbyMorgan.com](mailto:kmdsi@KirbyMorgan.com)