



# Kirby Morgan Dive Systems, Inc.®

1430 Jason Way Santa Maria, California 93455

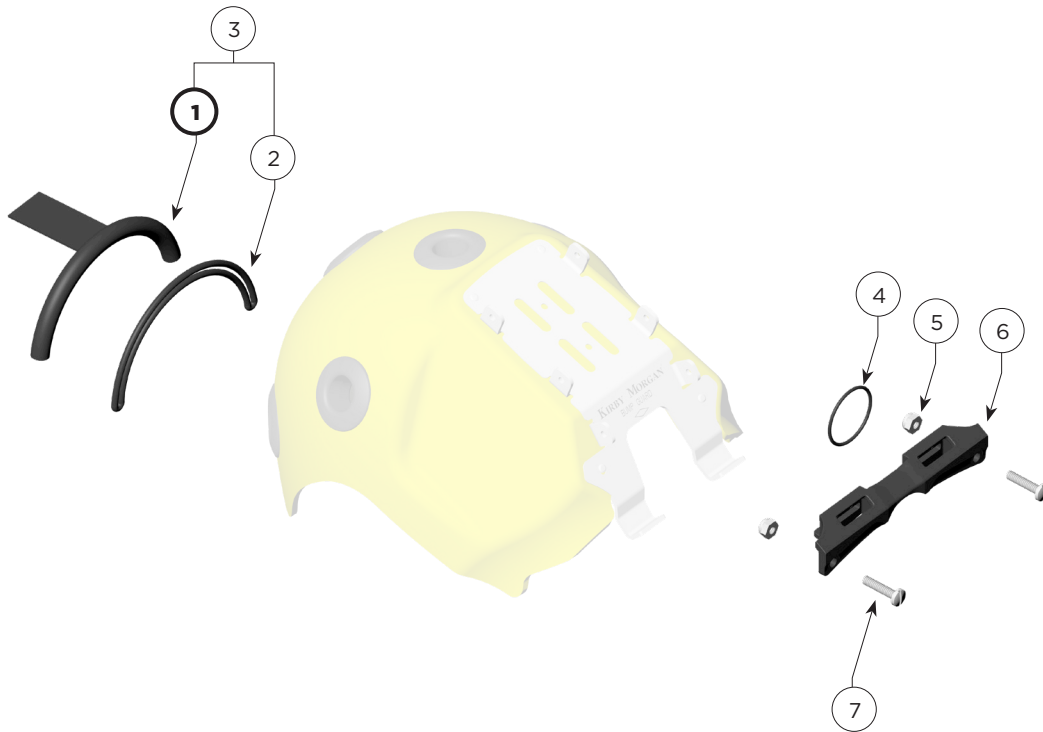
Phone: 805/928-7772 Fax: 805/928-0342

www.KirbyMorgan.com email: kmdsi@KirbyMorgan.com

## Part #825-125 Bump Guard Kit

LOC#	PART #	DESCRIPTION	QTY
1	810-127	O-ring	See loc #3
2	810-009	Rear Harness	See loc #3
3	805-040	Rear Harness Assembly	1
4	510-026	O-ring	1

LOC#	PART #	DESCRIPTION	QTY
5	530-145	Nut	2
6	820-234	Bump Guard Bracket	1
7	830-048	Screw	2



### Tools and Components Required:

- Flat Blade (Slot) Screwdriver × 2



#### NOTE

The O-ring is installed around the front of the Bump Guard Bracket and the top Buckle Assembly. The O-ring is secured to the bracket using a Larks Head style knot, where the O-ring is threaded around the bracket and into the free end of the O-ring. This free end is placed over and onto the buckle assembly, creating a pull on this top buckle assembly and holding the assembly out and away from the Bump Guard.



# Kirby Morgan Dive Systems, Inc.®

1430 Jason Way Santa Maria, California 93455

Phone: 805/928-7772 Fax: 805/928-0342

www.KirbyMorgan.com email: kmdsi@KirbyMorgan.com



1) Remove the strap keeper from the top mask strap.



2) Separate the top strap from the Buckle Assembly.

3) Grab the O-ring and secure it to the center of the bracket by feeding one end around the bracket and into and through the remaining loop of the O-ring. This will create a Cow Hitch/Larks Head style knot.







# Kirby Morgan Dive Systems, Inc.®

1430 Jason Way Santa Maria, California 93455

Phone: 805/928-7772 Fax: 805/928-0342

www.KirbyMorgan.com email: kmdsi@KirbyMorgan.com



4) Bring the bracket to the top leading edge of the mask and align the holes on the bracket with the Mount Tabs on the mask.

5) Open the leading loop of the O-ring and stretch it over and around the top buckle assembly.



6) Tighten the mounting screws to secure the Bump Guard Bracket firmly to the mask. A second screwdriver may be used on the locknut side of the bracket to prevent the nut from rotating and to ensure proper tightening.



# Kirby Morgan Dive Systems, Inc.®

1430 Jason Way Santa Maria, California 93455

Phone: 805/928-7772 Fax: 805/928-0342

www.KirbyMorgan.com email: kmdsi@KirbyMorgan.com



7) Ensure the O-ring remains secured between the Strap Guide and buckle assembly body.

8) Reinstall the top mask strap into the Buckle assembly with a Strap keeper.

## Rear Harness Assembly

The Rear Harness Assembly is installed on the two bottom (jaw) mask straps. The Rear Harness Assembly secures the rear portion of the Bump Guard when looped over the Rear Bracket.

### Tools and Components Required:

- None



9) Remove the Strap Keepers and unthread the two bottom (jaw) mask straps.





# Kirby Morgan Dive Systems, Inc.®

1430 Jason Way Santa Maria, California 93455

Phone: 805/928-7772 Fax: 805/928-0342

www.KirbyMorgan.com email: kmdsi@KirbyMorgan.com

10) Feed each leg strap through the open loops on the assembly.



11) Reinstall the Mask Strap and Strap Keepers.

## Bump Guard Mounting Instructions



The Bump Guard Bracket, spring O-ring, and Rear Harness Assembly MUST be installed before securing the Bump Guard to the mask. The Bump Guard should ONLY be secured to the mask once ALL pre-dive checks and inspections are complete.



# Kirby Morgan Dive Systems, Inc.®

1430 Jason Way Santa Maria, California 93455

Phone: 805/928-7772 Fax: 805/928-0342

www.KirbyMorgan.com email: kmdsi@KirbyMorgan.com



12) The tabs from the Shell Alignment Fork will fit into the top slots on the Bump Guard Mounting Bracket. The tabs are rotated into the bracket from the back side (rear) of the bracket that is secured to the top of the mask.



13) Once the forks are secured into the Bump Guard Bracket and the Bump Guard is resting on the diver's head in the proper manner, the Rear Harness Assembly on the mask can be secured to the rear Bracket found on the Bump Guard.



**NOTE**

This strap will not function properly unless the mask straps (particularly the lower) have been tightened properly.



**IMPORTANT**

If the diver's entry is a giant stride or height, it is recommended that the diver use one hand to aid in securing the Bump Guard on impact with the water.



*This page intentionally left blank.*



TM

Kirby Morgan Dive Systems, Inc.  
1430 Jason Way  
Santa Maria, CA 93455, USA  
Telephone (805) 928-7772, FAX (805) 928-0342  
E-Mail: [KMDSI@KirbyMorgan.com](mailto:KMDSI@KirbyMorgan.com), Web Site: [www.KirbyMorgan.com](http://www.KirbyMorgan.com)