

SuperLite® 17C Helmet

P/N 500-599 / 500-600

| Location # | Part # | Description |
|------------|----------|--|
| 1 | 520-054 | Visor |
| 2 | 510-754 | Head Cushion Assembly |
| | 510-722 | Head Cushion Bag |
| 3 | 510-837 | Head Cushion Foam Spacer Assembly (Order P/N 525-745) |
| | 510-836 | Head Cushion Foam Spacer Bag |
| 4 | 510-683 | Chin Cushion Assembly |
| | 510-639 | Chin Cushion Bag |
| 5 | 505-024 | Side Block Assembly |
| 6 | 520-033 | O-ring, Teflon® |
| 7 | 555-154 | Bent tube Assembly, No O-rings (Order P/N 555-155) |
| 8 | 510-012 | O-ring |
| 9 | 555-155 | Bent Tube Assembly w/O-rings |
| 10 | 560-125 | Weight, Top |
| 11 | 530-070 | Screw |
| 12 | 530-035 | Screw |
| 13 | 530-070 | Screw |
| 14 | 530-540 | Washer |
| 15 | 505-106* | Helmet Shell, 17C with Ring |
| 16 | 530-078 | Screw |
| 17 | 530-040 | Screw |
| 18 | 530-540 | Washer |
| 19 | 530-406 | Washer |
| 20 | 530-062 | Screw |
| 21 | 540-132 | Mount Bracket, Starboard Side |
| 22 | 540-133 | Handle, SL 17C |
| 23 | 540-130 | Mount Bracket, Port Side |
| 24 | 530-045 | Screw |
| 25 | 510-762 | Air Train Gasket |
| 26 | 530-050 | Screw |
| 27 | 530-535 | Washer |
| 28 | 530-415 | Washer, Lock |
| 29 | 530-317 | Nut |
| 30 | 545-016 | Air Train |
| 31 | 530-535 | Washer |
| 32 | 530-317 | Nut |
| 33 | 530-052 | Screw |
| 34 | 530-035 | Screw |
| 35 | 550-062 | Knob, Nose Block |
| 36 | 555-180 | Packing Nut |
| 37 | 510-008 | O-ring |
| 38 | 550-116 | Nose Block Guide |
| 39 | 560-070 | Port Retainer, w/#38 |
| 40 | 510-010 | O-ring |
| 41 | 520-004* | Face Port |
| 42 | 560-086 | Weight, Port, SL 17C |

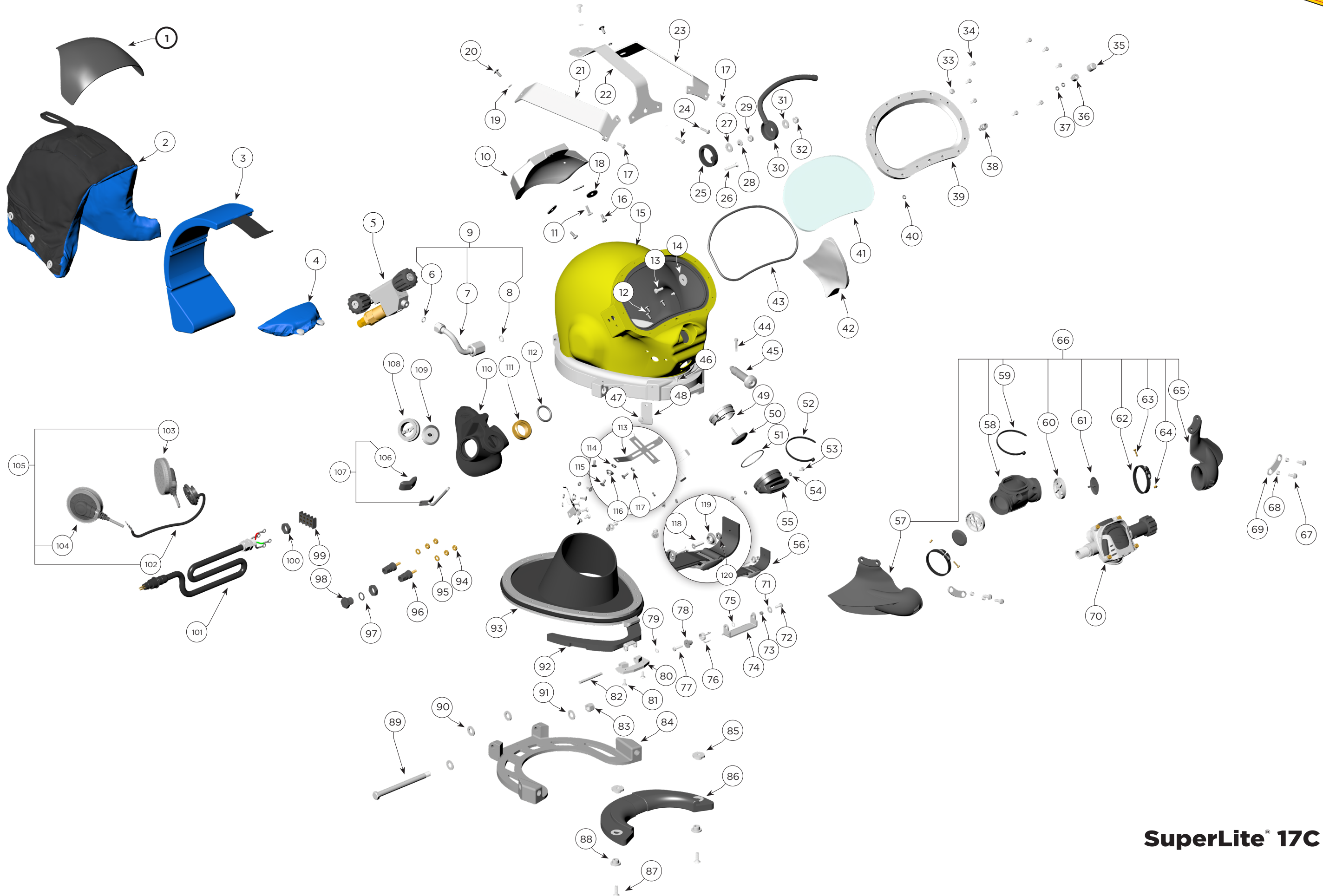
| Location # | Part # | Description |
|------------|---------|---|
| 43 | 510-260 | O-ring, View Port |
| 44 | 530-015 | Screw |
| 45 | 505-110 | Sealed Pull Pin |
| 46 | 530-032 | Screw |
| 47 | 530-059 | Screw |
| 48 | 540-039 | Front Stand Off |
| 49 | 550-063 | Body, Water Dump |
| 50 | 510-561 | Valve, Water Dump, Black |
| 51 | 510-033 | O-ring |
| 52 | 520-042 | Tie Wrap |
| 53 | 530-019 | Screw |
| 54 | 510-007 | O-ring |
| 55 | 560-530 | Cover, Water Dump Adapter |
| 56 | 505-111 | Chin Strap Assembly (Order 525-716 Kit) |
| 57 | 510-786 | Starboard Whisker Wing |
| 58 | 510-760 | Quad Valve Exhaust Main Body |
| 59 | 520-042 | Tie Wrap |
| 60 | 520-200 | Whisker Exhaust Valve Insert |
| 61 | 510-776 | Exhaust Valve |
| 62 | 520-118 | Tri/Quad Valve Whisker Clamp |
| 63 | 530-008 | Brass Screw |
| 64 | 530-009 | Brass Nut |
| 65 | 510-787 | Port Whisker Wing |
| 66 | 505-730 | Quad Valve Exhaust Assembly |
| 67 | 530-045 | Screw |
| 68 | 550-061 | Spacer |
| 69 | 540-015 | Kidney Plate |
| 70 | 505-455 | 455 Balanced Regulator (Order P/N 525-765) |
| 71 | 530-546 | Washer for Swing Catch |
| 72 | 530-035 | Screw |
| 73 | 550-061 | Spacer |
| 74 | 540-086 | Swing Catch |
| 75 | 520-167 | Teflon® Washer for Swing Catch |
| 76 | 535-825 | Spring, Swing Catch |
| 77 | 530-045 | Screw |
| 78 | 550-122 | Spring Spacer |
| 79 | 530-312 | Clip, Hinge Pin |
| 80 | 550-216 | Front Yoke Hinge |
| 81 | 530-018 | Screw |
| 82 | 530-311 | Pin, Front Yoke Hinge |
| 83 | 530-028 | Lock Nut |
| 84 | 560-111 | Locking Collar |
| 85 | 550-113 | Adjustment Nut, Neck Pad |
| 86 | 520-098 | Neck Pad |

| Location # | Part # | Description |
|------------|---------|--|
| 87 | 530-064 | Screw |
| 88 | 550-045 | T-Washer |
| 89 | 530-027 | Hinge Bolt |
| 90 | 520-165 | Washer |
| 91 | 530-545 | Washer |
| 92 | 520-012 | Front Yoke |
| 93 | 505-101 | Neck Ring Assembly, (Latex) Medium |
| 94 | 530-308 | Hex Nut |
| 95 | 530-525 | Washer |
| 96 | 515-035 | Communications Post |
| 97 | 510-481 | O-ring |
| 98 | 550-043 | Plug |
| 99 | 515-061 | Terminal Block |
| 100 | 550-040 | Nut |
| 101 | 505-047 | W.P. Connector Assembly |
| 102 | 515-029 | Microphone Assembly |
| 103 | 515-019 | Earphone, Left, 15.5" |
| 104 | 515-018 | Earphone, Right, 9" |
| 105 | 515-033 | Communications Set |
| 106 | 510-575 | Nose Block Pad |
| 107 | 545-015 | Nose Block Device <i>Includes location #106</i> |
| 108 | 520-020 | Valve Body |
| 109 | 510-550 | Valve, Oral Nasal |
| 110 | 510-724 | Low Volume Oral Nasal |
| 111 | 550-081 | Nut, Regulator Mount |
| 112 | 510-490 | O-ring |
| 113 | 540-054 | Earphone Retainer |
| 114 | 530-527 | Washer |
| 115 | 530-018 | Screw |
| 116 | 530-702 | Snap |
| 117 | 530-519 | Washer |
| 118 | 530-031 | Screw |
| 119 | 530-702 | Snap |
| 120 | 530-519 | Washer |

⚠ CAUTION

Use only Kirby Morgan original replacement parts. The use of other manufacturers' parts will interfere with the performance characteristics of your life support equipment and may jeopardize your safety. Additionally, any substitutions will void any warranties offered by KMDSI. When ordering spares, always insist on Kirby Morgan original parts.

* Denotes a critical component



SuperLite® 17C Helmet