

SuperLite® 27® Helmet 500-040 / 500-041

Location #	Part #	Description
1	520-054	Visor
2	510-750	SL 27® Head Cushion Assembly
	510-722	Head Cushion Bag
3	510-837	Head Cushion Foam Spacer Assembly (Order P/N 525-745)
	510-836	Head Cushion Foam Spacer Bag
4	510-683	Chin Cushion Assembly
	510-639	Chin Cushion Bag
5	505-024	Side Block Assembly
	505-025	Side Block Assembly, Brass
6	520-033	O-ring, Teflon®
7	555-154	Bent tube Assembly, No O-rings (Order P/N 555-155)
8	510-012	O-ring
9	555-155	Bent Tube Assembly w/O-rings
10	530-070	Screw
11	530-540	Washer
12	505-105*	Helmet Shell, SL 27 with Ring
13	530-078	Screw
14	530-540	Washer
15	525-225	Rear Weight, SL 27 (sold separately)
16	530-070	Screw
17	560-108	Handle, SL 27
	560-107	Handle, Brass, SL 27
18	560-115	Plaque, SL 27
19	560-106	Handle with Plaque, SL 27
	560-105	Handle with Plaque, Brass, SL 27
20	530-045	Screw
21	510-762	Air Train Gasket
22	530-050	Screw
23	530-535	Washer
24	530-415	Washer, Lock
25	530-317	Nut
26	545-016	Air Train
27	530-535	Washer
28	530-317	Nut
29	560-081	Weight, Port Side, SL 27
	560-082	Weight, Port Side, Brass, SL 27
30	530-062	Screw
31	530-052	Screw
32	530-035	Screw
33	550-062	Knob, Nose Block
	550-252	Knob, Nose Block, Brass
34	555-180	Packing Nut
	555-190	Packing Nut, Brass

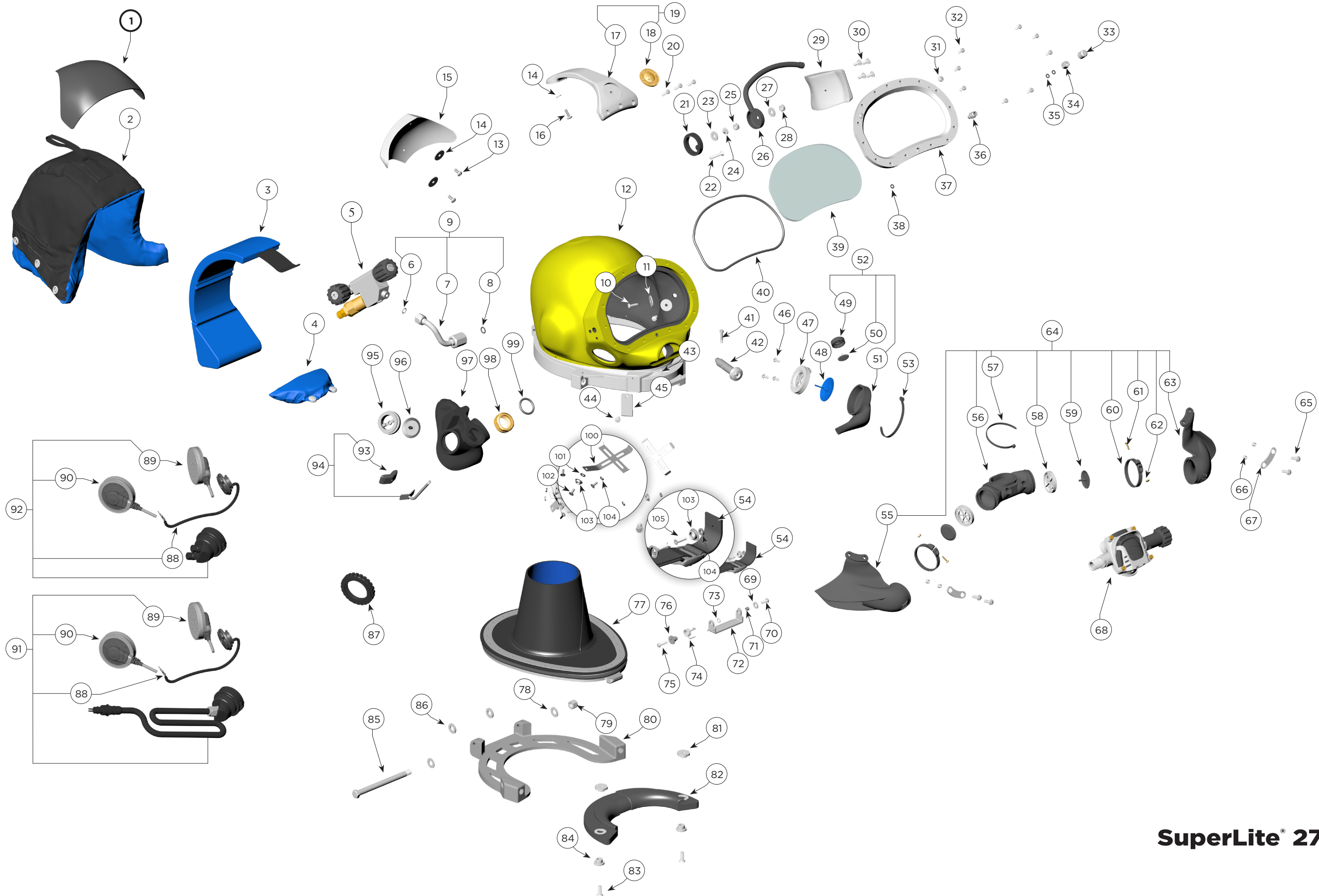
Location #	Part #	Description
35	510-008	O-ring
36	550-116	Nose Block Guide
	550-249	Nose Block Guide, Brass
37	560-070	Port Retainer, w/#36
	560-071	Port Retainer, Brass, w/#36 Brass
38	510-010	O-ring
39	520-004*	Face Port
40	510-260	O-ring, View Port
41	530-015	Screw
42	505-110	Sealed Pull Pin
43	530-032	Screw
44	530-059	Screw
45	540-039	Front Stand Off
46	530-032	Screw
47	550-350	Water Dump Body
48	510-557	Water Dump Valve, SL 27
49	820-120	Valve Body, Purge
50	810-025	Valve, Purge
51	510-780	Water Purge Deflector
52	505-726	Water Purge Deflector Assembly
53	520-042	Tie Wrap
54	505-111	Chin Strap Assembly (Order 525-716 Kit)
55	510-786	Starboard Whisker Wing
56	510-759	Tri Valve Exhaust Main Body
57	520-042	Tie Wrap
58	520-200	Whisker Exhaust Valve Insert
59	510-776	Exhaust Valve
60	520-118	Tri/Quad Valve Whisker Clamp
61	530-008	Brass Screw
62	530-009	Brass Nut
63	510-787	Port Whisker Wing
64	505-729	Tri Valve Assembly, SL 27 (Order 525-755)
65	530-045	Screw
66	550-061	Spacer
67	540-015	Kidney Plate
68	505-455	455 Balanced Regulator (Order P/N 525-765)
69	530-546	Washer for Swing Catch
70	530-035	Screw
71	550-061	Spacer
72	540-086	Swing Catch
73	520-167	Teflon® Washer for Swing Catch
74	535-825	Spring, Swing Catch
75	530-045	Screw

Location #	Part #	Description
76	550-122	Spring Spacer
77	505-100	Neck Ring Assembly, SL 27 (neoprene) Medium
78	530-545	Washer
79	530-028	Lock Nut
80	560-111	Locking Collar
81	550-113	Adjustment Nut, Neck Pad
82	520-156	Neck Pad, SL 27
83	530-064	Screw
84	550-045	T-Washer
85	530-027	Hinge Bolt
86	520-165	Washer
87	320-026	Comm. Mount Nut
88	515-029	Microphone Assembly
89	515-019	Earphone, Left, 15.5"
90	515-018	Earphone, Right, 9"
91	515-024	Comm. Assembly w/MWP
92	515-023	Comm. Assembly w/Posts
93	510-575	Nose Block Pad
94	545-070	Nose Block, SL 27* <i>Includes location #93</i>
95	520-020	Valve Body
96	510-550	Valve, Oral Nasal
97	510-724	Low Volume Oral Nasal
	510-569	Oral Nasal Mask, Small (sold separately)
98	550-081	Nut, Regulator Mount
99	510-490	O-ring
100	540-054	Earphone Retainer
101	530-519	Washer
102	530-018	Screw
103	530-702	Snap
104	530-527	Washer
105	530-031	Screw

⚠ CAUTION

Use only Kirby Morgan original replacement parts. The use of other manufacturers' parts will interfere with the performance characteristics of your life support equipment and may jeopardize your safety. Additionally, any substitutions will void any warranties offered by KMDSI. When ordering spares, always insist on Kirby Morgan original parts.

* Denotes a critical component



SuperLite® 27® Helmet