



Kirby Morgan Dive Systems, Inc.®

1430 Jason Way, Santa Maria, California 93455

Phone: 805/928-7772 Fax: 805/928-0342

www.kirbymorgan.com e-mail: kmdsi@kirbymorgan.com

Bulletin #5 of 2016. May 2, 2016

New Product

P/N 525-757 Parts Upgrade Kit for 450 Regulator

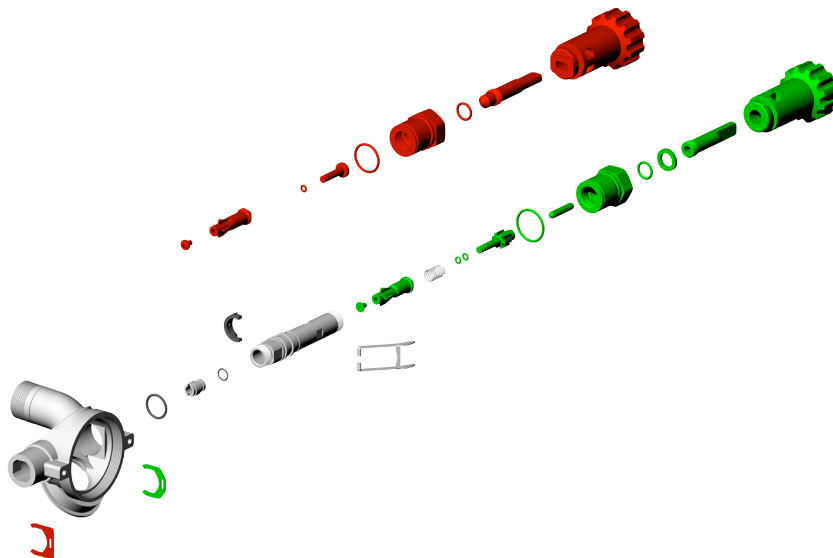
Products Affected:

KM 57 Helmets 500-080/081, 505-560 SuperFlow® 450 Regulator, 525-763 & 525-766 Conversion Kits

To enable smooth & easy adjustment of the SuperFlow® 450 Regulator, we are happy to offer a new Parts Upgrade Kit, 525-757.

The 525-757 450 Regulator Parts Upgrade Kit Contains:

Qty	Part #	Description	Replaces
1	205-020	Inlet Valve Assembly	(Replaces 205-015SS)
2	210-055	O-ring, Balanced	(Standard Part)
1	505-088	Adjustment Knob/Packing Nut Assembly	(Replaces 505-062)
1	540-531	Lock Clip	(Standard Part)
1	550-549	Balance Spacer	(Replaces 220-030)
1	550-643	Transfer Pin	(A new addition)



Above, the green colored parts in the upgrade kit that are replacing the red colored SuperFlow® 450 regulator parts.

The 525-757 450 Parts Upgrade Kits are available now.

Please contact your local KMDSI dealer or e-mail sales@kirbymorgan.com for more information.

