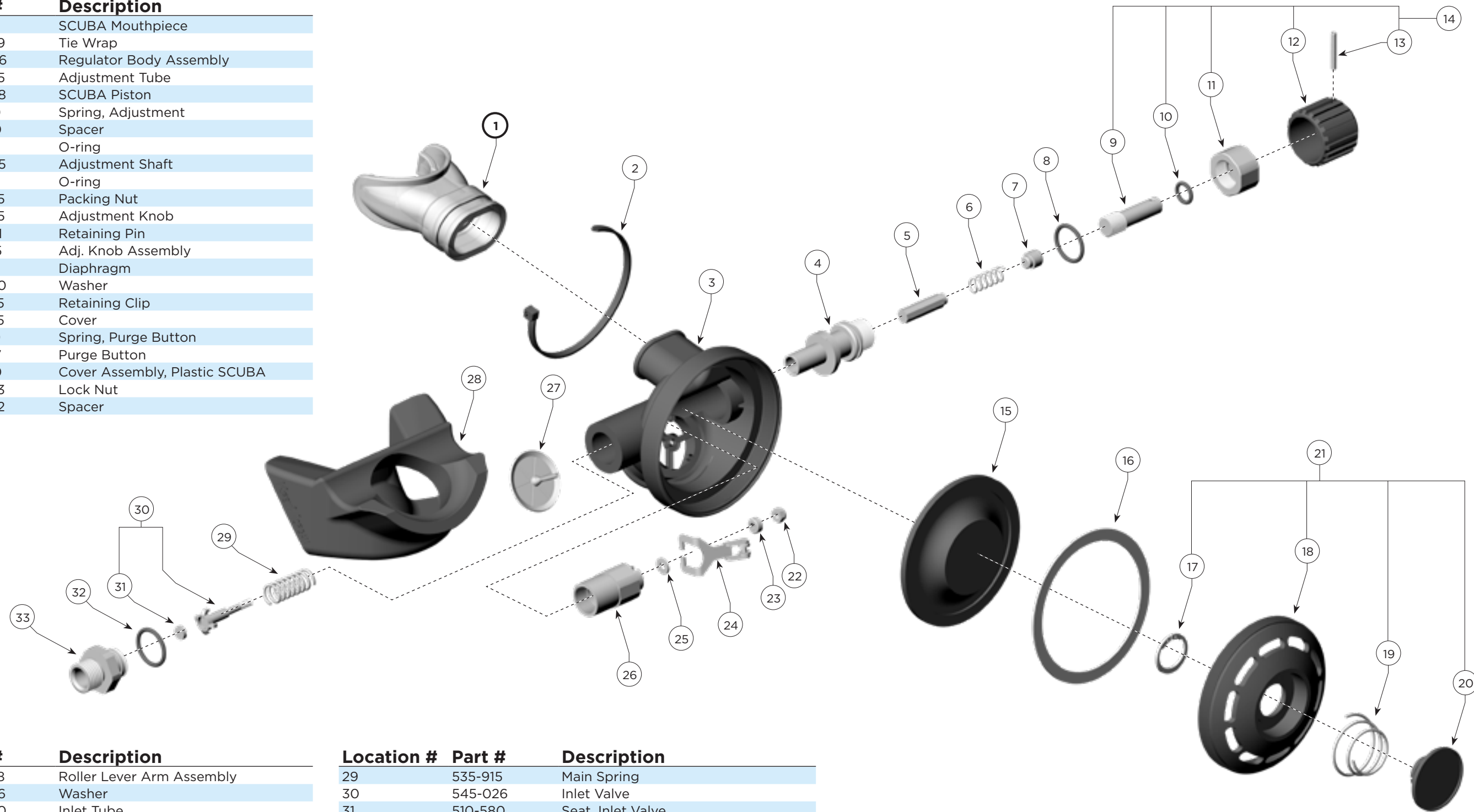


# Plastic Adjustable Second Stage SCUBA Regulator

## P/N 305-166

Location #	Part #	Description
1	310-278	SCUBA Mouthpiece
2	520-039	Tie Wrap
3	320-006	Regulator Body Assembly
4	350-205	Adjustment Tube
5	550-098	SCUBA Piston
6	535-910	Spring, Adjustment
7	350-210	Spacer
8	510-016	O-ring
9	350-045	Adjustment Shaft
10	510-011	O-ring
11	350-025	Packing Nut
12	320-035	Adjustment Knob
13	530-601	Retaining Pin
14	305-015	Adj. Knob Assembly
15	510-553	Diaphragm
16	320-030	Washer
17	535-905	Retaining Clip
18	350-075	Cover
19	535-810	Spring, Purge Button
20	520-017	Purge Button
21	305-180	Cover Assembly, Plastic SCUBA
22	530-303	Lock Nut
23	550-052	Spacer



Location #	Part #	Description
24	545-038	Roller Lever Arm Assembly
25	530-506	Washer
26	350-200	Inlet Tube
27	510-552	Exhaust Valve
28	310-200	SCUBA Exhaust "T", Hi Flow

Location #	Part #	Description
29	535-915	Main Spring
30	545-026	Inlet Valve
31	510-580	Seat, Inlet Valve
32	510-014	O-ring
33	350-003	SCUBA Inlet Nipple



Kirby Morgan Dive Systems, Inc.<sup>®</sup> 1430 Jason Way, Santa Maria, CA 93455

Phone: 805/928-7772 Fax: 805/928-0342

[www.KirbyMorgan.com](http://www.KirbyMorgan.com) e-mail: [kmdsi@KirbyMorgan.com](mailto:kmdsi@KirbyMorgan.com)